

Career Prospects / Professional Qualifications

Graduates will possess a Registered Teacher Status in Hong Kong. They can be :

Teacher

Teaching Assistant

Education Officer or Field Officer
in non-governmental organization

Officer in Agriculture, Fisheries
and Conservation Department

Officer in Environmental
Protection Department

Civil Servant

Further Studies



Every effort has been made to ensure that information contained in this leaflet is correct. Changes to any aspects of the programmes may be made from time to time due to unforeseeable circumstances beyond our control and the University reserves the right to make amendments to any information contained in this website without prior notice. The University accepts no liability for any loss or damage arising from any use or misuse of or reliance on any information contained in this leaflet. Any aspect of the course and course offerings (including, without limitation, the content of the course and the manner in which the course is taught) may be subject to change at any time at the sole discretion of the University. Without limiting the right of the University to amend the course and its course offerings, it is envisaged that changes may be required due to factors such as staffing, enrolment levels, logistical arrangements, curriculum changes, and other factors caused by unforeseeable circumstances. Tuition fees, once paid, are non-refundable. EdUHK is one of the teacher education providers in Hong Kong. Graduates of the University's teacher education programmes are eligible to apply to become fully qualified and registered teachers. As regards teacher registration, graduates should approach the Teacher Registration Team of the Education Bureau (EDB) to submit applications directly. All applications will be assessed by the EDB which will consider, among other things, whether an applicant has been convicted of any criminal offence (including sex-related offences) in Hong Kong or elsewhere, or is involved in any ongoing criminal proceedings or investigations.



ADMISSION ENQUIRIES

T (852) 2948 6886

E admission@eduhk.hk

W www.apply.eduhk.hk/ug/programmes/bedgeog

PROGRAMME ENQUIRIES

Dr Dennis Hui

T (852) 2948 6365

E huilh@eduhk.hk



香港教育大學

The Education University
of Hong Kong

**BACHELOR
of EDUCATION
(HONOURS)**

GEOGRAPHY

Training qualified teachers for
secondary school geography
curriculum, blending solid classroom
knowledge with innovative teaching
and overseas fieldwork experience

5 YEAR
full time



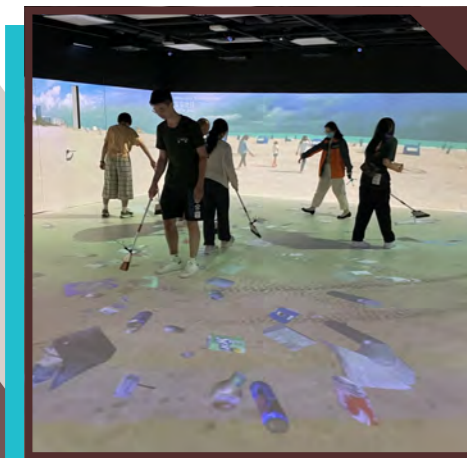
Department of
Social Sciences and Policy Studies
社會科學與政策研究學系

PROGRAMME CODE JS8428

PROGRAMME AIMS

This is a UGC-funded programme which aims to:

- Demonstrate a solid understanding and command of geographical concepts and theories and apply the knowledge to solve geographical problems in the local, regional and global contexts with complex human-physical interface;
- Develop learning capability to be a competent and effective learner and teacher in a dynamic and an ever-changing society;
- Apply critical thinking to analyse the geographical and environmental issues that address the relationship among land, nature and people in the physical and human environments;
- Demonstrate the pedagogical literacy and competency required for the development and implementation of curriculum in secondary schools; and
- Develop essential abilities to plan, execute, report on field work and geographical research with the skills of data analysis, Geographic Information System (GIS), remote sensing and field studies.



Major Core Courses and Pedagogy for Majors Offered in the BEd (Geography)



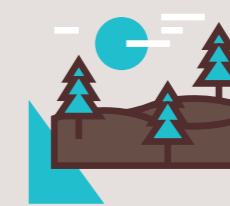
Physical Geography Courses

- Foundation of Physical Geography
- Natural Hazards
- Geomorphology and Hydrology



Human and Cultural Geography Courses

- Globalizing China : The People and Development
- Economic Geography
- Urbanization and Transportation : Theory and Policy
- Understanding Cultural and Human Geography



Environmental Geography Courses

- Global Environmental Issues
- Conservation and Management of Natural Resources
- Climate Change and Global Warming
- Tourism and Sustainability



Geographical Skills and Application of Pedagogical Courses

- Spatial Data Analysis and GIS
- Field Methods and Teaching in Geography*#
- Pedagogy in Geographical Education#

An optional Resources Management minor is available for BEd(Geography) students.

Note:

(1) Students admitted into this programme starting from the 2023/24 cohort are required to visit the Greater Bay Area (GBA) and/or other parts of Mainland China. Programme may also require students to participate in other non-local learning experience for completion of the programme. While the visits are heavily subsidised, students are still required to contribute part of the estimated cost of the visits ("student contribution"), whereas personal entertainment, meals expenses, travel document fee and personal insurance costs will not be supported. The estimated cost of the visits for students admitted to the 2024/25 cohort is not available yet as it is subject to a variety of factors such as changes to the cost of the visits as a result of inflation, trip duration, traveling expenses, the exchange rate, etc. The exact amount of student contribution is thus not available.

(2) Students admitted into this programme are required to join a compulsory overseas residential field study and contribute at least 18% of the estimated cost of the trip in order to complete the programme.



Pedagogy for Major course under Education Studies Domain

* The course includes a compulsory overseas residential field study.